



ANNUAL REPORT 2022



Table of Contents

3

Our Story

5

A message from Scott Strong, Executive Director

7

Financial Snapshot

8

Programs

15

Leadership

17

Volunteer Information



Our Story at RISE

WHERE WE STARTED

RISE emerged in April 2017 from a merger between Community Partnerships, Inc. and Center for Families, two Dane County non-profits focused on community-based, strengths-driven services to children, families, and young adults. When Community Partnerships was established in 2000, the agency's primary focus was providing mental health wraparound services to children and their families. Since 1976, Center for Families' services and programs have focused on building strong, stable families and preventing child abuse. Together, the organizations have more than 50 years of experience providing services in our community, and serve over 1,000 participants annually.

RISE believes in the power of human connection and the resilience that exists within everyone. We embrace strengths-based, solutions-focused approaches to addressing the mental health and wellness needs of our community. Our services provide education, support, stabilization, and coordination of care to children, families, and individuals in our community.

OUR MISSION

Advance the wellness of children, individuals, and families by providing early childhood and mental health services to help communities and families thrive.

OUR VISION

RISE will be a leader in wraparound services for early childhood, mental health, and wellness. We will jointly shape expectations alongside participants while framing equitable partnerships throughout the region. We will be regarded for our stewardship of resources and success in nurturing an inclusive and caring environment for participants and staff alike



RISE VALUES

Equity and Inclusion

Intentional, insightful and profound service cannot be done without acknowledging, addressing, and countering the absence of inclusion and equity in our community. We will challenge our own beliefs and behaviors around cultural humility and biases in order to provide culturally responsive services to communities, individuals, and partners.

Collaboration

People are most successful in achieving their goals when all systems are working together. We strive to create environments in which people can both exchange ideas and create solutions. We believe in working as a partner with participants, colleagues, and the larger community to become more effective. This spirit extends to our governance processes by which the Board of Directors and staff work in partnership with each other and with community stakeholders to advance our mission. It also infuses the commitment to teamwork in our work environment.

Growth

We believe in partnering with people to develop their abilities. We foster a love of learning and a mindset by which challenges are viewed as opportunities to improve learning and build skills. We also respect that beliefs, values, preferences, and strengths are relationally acquired and may change over time such that we must adapt the work we do and how we approach each other.

Resourcefulness

We believe in the power of applying imagination and creativity to help find solutions to problems and to help people deal well with new or difficult situations. We strive to maximize available resources and use informal community supports to advance success. Our work focuses on partnering with participants and staff to find and leverage resources to cultivate their skills.

Care

We are motivated to help others by offering hope and support during challenging times. We offer trauma-informed care, and our approach is culturally informed. We respect the unique needs and abilities of every individual and seek to leverage the strengths and assets of each person.





A message from the Executive Director

Scott Strong

Executive Director

Scott has been at RISE since 2000, and the Executive Director since 2005.

After many years of planning and making our official move to our newly renovated space in November of 2021, RISE welcomed the community and our partners to our new space in May for our grand opening. This event brought together many friendly faces and provided an opportunity for many to meet face-to-face for the very first time after two years of working mainly at home and through virtual meetings, and was a reminder of the power of connection and the energy that is generated when we are together.

Following the grand opening, RISE continued to explore ways to gradually bring staff together. Although as a community-based organization that delivers most of its services in the home, it was important to bring our teams back together. We also had many new staff who had started during the pandemic and hadn't been able to work collaboratively with their coworkers in person.

Like the rest of our community, we moved cautiously and followed the current public health guidelines. By the end of the year, we had established more in-office work, more collaboration among staff, and began to reestablish our internal community and culture. Additionally, we hosted more family and community meetings, and we began to hold more events with community partners in our new space.

RISE has been able to build upon our experiences and has embraced a new work model that is both responsive to our community and to its employees. We learned that returning to the office was important to build relationships and teamwork. It has its advantages by offering both employees and participants more flexibility to tailor our services and be more efficient and enhance the quality of the individualized care we wish to provide for individuals, children, and families.

MEET LOUBNA

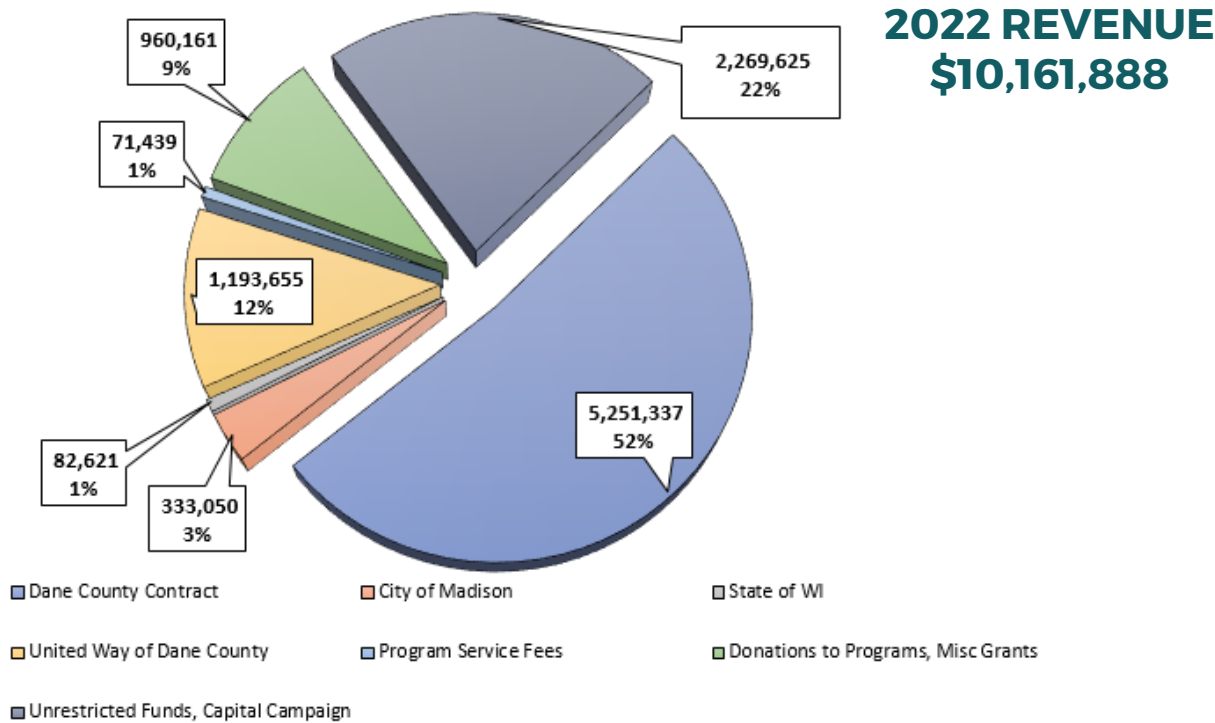
When Loubna and her family first met their Welcome Baby & Beyond (WBB) Family Support Specialist, they had just brought their 6-month-old premature twins, after many weeks in the NICU, to live with them and their daughter in a one-bedroom apartment. Loubna and her husband were both immigrants and had dreams of owning a home through Habitat for Humanity.

While Loubna and her family were enrolled in WBB, they became connected to a variety of resources to support their family including the Birth-3 program, speech and language services, and early childhood development. They also received support helping to navigate the Social Security and Children's Long Term Support systems. Five years after that first visit with WBB Loubna became a Permanent Resident, her husband grew his vocational skills, their twin sons graduated from WBB, and they now own their own home from Habitat for Humanity where Loubna's husband applied his new vocational skills by obtaining a building permit and adding a room to their home.

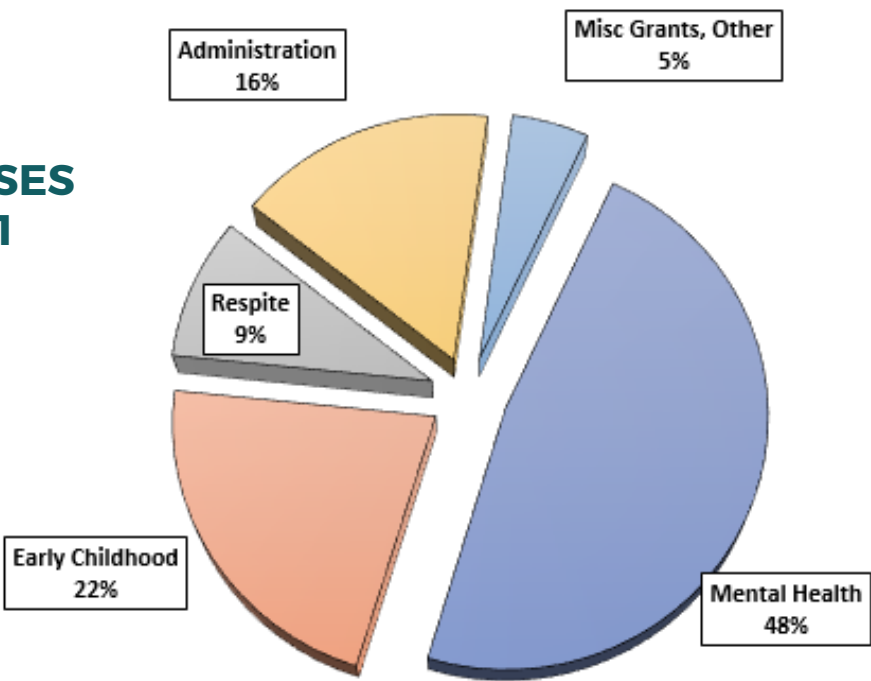
“Loubna and her husband were both immigrants and had dreams of owning a home through Habitat for Humanity.”



Financial Year In Review



2022 EXPENSES
\$7,485,081



2022

EARLY CHILDHOOD



Early Childhood Programs

Welcome Baby & Beyond



50

children received
early childhood
development and education

15
Graduates!



ParentChild+

89

children received
early literacy
support

5,389

Service Hours
Completed



20
Graduates!

Early Childhood Programs

Early Childhood Initiative



93

families received early
childhood
development and
education

Over **803**
Service Hours
Completed



MENTAL HEALTH PROGRAMS

2022



Mental Health Programs

Children Come First



110

families received
intensive mental
health wraparound
care

85%

participants in
Hospital Diversion
Program remained
at home for
treatment

Comprehensive Community Services

71

participants received
comprehensive
mental health care
and wraparound
support



Mental Health Programs

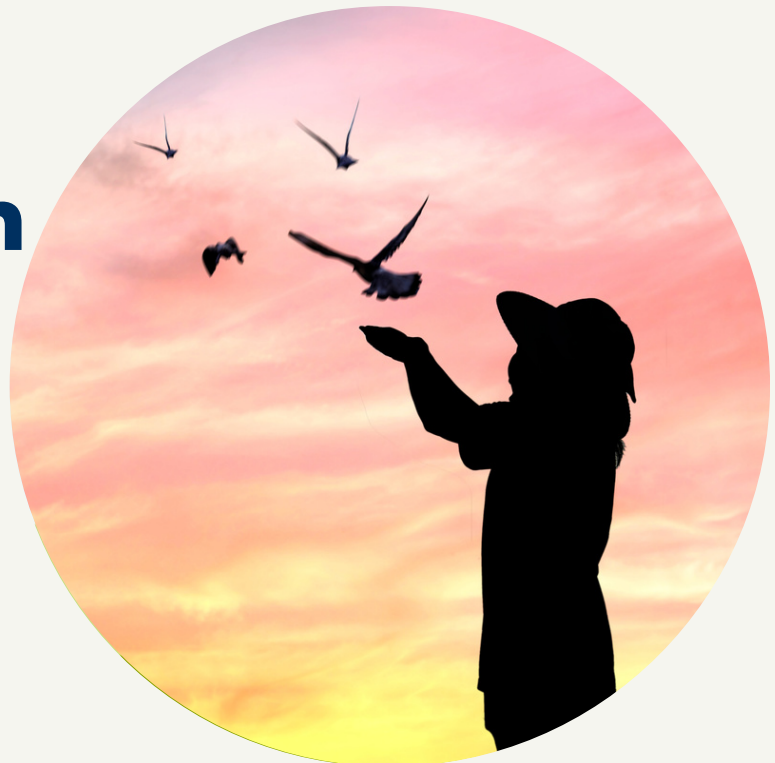
Court Ordered Evaluations

868
evaluations
completed in
2022



Therapeutic Services Team

20
individuals received
strengths-based,
trauma-informed
clinical therapeutic
services



The Respite Center

382

Children received
planned or
emergency crisis
respite care.



11,608
service
hours
provided

Leadership

Board of Directors

Nyra Jordan
Chair

Andy Mueller
Vice Chair

Mark Westover
Treasurer

Monicka Whitehead
Secretary

Brian Beinborn
Kayla Conklin

Teresa Holmes
Mary Michaud

Gary Praznik

Reginald Nnazor

Barret Van Sicklen

John Weinstock



Leadership

Senior Leadership



Scott Strong
Executive Director

Kate Perleberg
Chief Financial Officer

Athena Luxem
Director of Quality Assurance

Fernando Cano Ospina
Director of Diversity, Equity and Inclusion

Monica Caldwell
Director of Mental Health Programs

Karen Fujikawa
Mental Health Director



Adrian Rechy
Director of Human Resources

Nicolle Hill
Early Childhood Director

Sara Flugum
Director of Children Come First and Respite

Maggie Waid
Director of Development



Thank you to our volunteers!

RISE Community
Partners
Volunteered...

500

hours of
service
to RISE
in 2022!



Thank You- Community Partners

Business & Foundation Partners:

40 Winks Foundation
ACD Distributions
American Family Insurance Dreams Foundation
American Family Insurance Steve Stricker Foundation
ATT Pioneers
Bell Bank
Benevity
Bob "Rabbi" Memorial Fund
Carter's Clothing Madison
Carter's Clothing Baraboo, WI
City of Madison
Clarity Technology, Inc
Colony Brands Foundation Inc.
Courtier Foundation
Covenant Presbyterian Church
Devereaux Hall Gift Fund
Eagles Club Auxiliary
Eagles Club Auxiliary
Exchange Club Of Sun Prairie
Festival Foods
Fidelity Charitable
J.H. Findorff
First Unitarian Society
Gargiulo Powell Fund Grant
Greenley Family Fund
Harker Heating & Cooling, Inc.
Holt Real Estate Team LLC
Humorology
IMT Insurance Company
John J Frautschi Family Foundation
Just Recovery for Racial Equity Initiative Grant- UW
Lau and Bea Christensen Charitable Foundation, Inc.
Lechner Cupcakes, LLC
Madison Capitols Hockey Team
Madison Gas & Electric Foundation
Madison Homebrewers & Tasters Guild

Madison South Rotary
Monona United Methodist Church
Oak Bank
Oscar Rennebohm Foundation, Inc
Otto Bremer Trust
Park Bank
Park Towne Development Corp.
Poke Plus Madison Inc
PRL Keystone Foundation
RBC Foundation - USA
Roots and Wings Foundation
Springs Window Fashions
TASC - Total Administrative Services Corporation
Timpano
Willy Street Coop - North

Individual Partners:

Abha Thakar
Alan Caldwell
Alan Lee and Margie Moeller
Allison Scholl
Andrea Pence
Anne Arnesen
Anne Kroeger
Barbara Olson
Benjamin Reynolds & Laura Bayer
Bradley Motl
Brian and Mary Andreas
Candace Suarez
Carl Zimm
Carli Stephan
Carol Samuel
Charles Hammer
Daniel and Sally Rossmiller

Thank You- Community Partners

Individual Partners:

Dolores Nelson & Frederick Nelson
Don Lindsay
Festival Foods
Donna Montgomery
Donna Ulteig
Dorothy Blotz
Pete Lundberg & Jill Lundberg
Richard Ammann
Emily Graf & Dave Graf
Emily King
Eric and Jane Schulenburg
Gargiulo Powell Fund Grant
Erica Kauten
Erica Serlin
Fran DeGraff
Josh Gormley & Vicki
Fredric Moskol & Bev Willer
Gagandeep Lamba
Gail Marker
Gerald Ring
James Moeser
Janet Yelk-Kenitz
Jatinder Cheema
Jeff Tubbs
Jennifer Ondrejka
Jill Phillips
Joel Rust
Jung Park
Karen Greenler
Kathryn Sandretto and William Chang
Kathy Perleberg
Kevin O'Connor
Kim Miller and Thomas Evans
Larry Bowman & Karen Bowman
Leah Sandholm
Linda Voit & Kevin Voit
Liz Buerger

Luke Salzwedel & Jess Salzwedel
Lynne Dennis
Maggie Waid & Jeffrey LeMessurier
Mankah Zama
Marc Lederman
Margaret Davis
Marie Sieker and Roderick Matthews
Marjorie Strong
Mary Maher
Matt Record
Michelle Krauska
Mike Kemplf
Mr. Bob Patterson
Ms. Diane Sorensen & Mr. Daniel Stier
Nancy Mairs Daly
Nancy Vedder-Shults and Mark Shults
Nancy Welch
Patricia Warner and Bruce Klein
Patrick Hallal
Raechel Pundsack
Rebecca Unverzagt
Robert Waterman
Robert Watson
Ruth Fisher
Scott Strong & Sarah Strong
Shawn Doherty
Sonia Kraft
Sue Riseling & Joanne Berg
Sue Robinson
Susan and Ellis Bauman
Susan and Michael McKiernan
Susan Bowditch
Susan Clark
Thomas and Nancy Sundal
Thomas Neujahr
Richard A. Vanden Heuvel & Debra Vanden
Tim Stadelman

Thank You- Community Partners

Individual Partners:

Timothy Otis & Mary Tierney
Tom & Jane Steidl
Tonia Neustifter and Ralph Cagle
Warren Buckles and Wendy Rakower
William Bird & Laura Bird
William Mueller



Thank You- Program Partners



United Way
of Dane County

