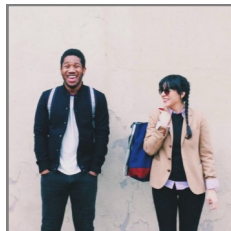
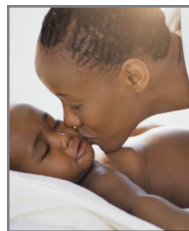




COMMUNITY PARTNERSHIPS

2014 Annual Report



“*Leaders in coordinating a system of care to advance mental health and wellness of individuals, families, and communities.*”

Community Partnerships continued to keep its eye on program expansion and identifying new opportunities to grow its community-based model to new populations in 2014. So when the opportunities arose to expand the CCF program to new populations and add the birth to three population, we were excited to both find a better way to continue to serve children and adolescents and begin to work with younger children and families even earlier.

The Early Childhood Initiative (ECI), a home visiting program for young parents with children ages 0-3 years old, joined the Community Partnerships' family of programs in January; the Children Come First (CCF) program expanded its reach and began serving children with mental illness who were at risk of an out of home placement or foster care disruption, adding to those already served who were at risk of an institutional

placement; with a grant from the Attic Angel Association the Mental Health Coordination Program (MHCP) began as a pilot to provide information and referral services to Madison Metropolitan School District in an attempt to reduce the number of steps it takes to connect students to mental health resources; and Community Partnerships was awarded a contract with Dane County to develop the Provider Network for Comprehensive Community Services, a new Medicaid benefit coming to Dane County in 2015. In addition to these new programs and expansions, we continued to improve the quality of our current programs.

2014 kept us very busy and the year went by quickly, but left Community Partnerships in a strong position with new and exciting initiatives.

Continued

Continued from page 1

With the expansion we are now able to provide an array of community-based services from birth to 30 years old. Each program is aligned with our mission to support the health and wellness of individuals in the community.

We look forward to the coming of the next year and the new and exciting opportunities, and challenges that it will present.

Scott Strong
Executive Director

ABOUT US

Community Partnerships, Inc. is a nonprofit organization serving individuals with mental health concerns. We believe in using a “wraparound” approach when working with consumers and their families which includes:

- Promoting individual & family strengths.
- Valuing consumer voice, culture, and beliefs.
- Providing individualized care.
- Team-based collaborations.
- A commitment to long term, sustainable, accessible supports and services.
- Setting measurable goals and celebrating success.

Community Partnerships recognizes our staff and board members who contributed to successful program outcomes and new program development in 2014:

Board of Directors

Tim Otis, Chair
Anne Smith, Vice Chair
Terry Metzger, Treasurer
Susan Heidrich, Secretary
Donnetta Foxx
Beth Rudy
Nikolai Skievaski
Carol Ziesemer
Kristin Zweifel Frederickson

Leadership Team

Scott Strong, Executive Director
Karen Bittner, Provider Network Manager
Lori Duzan, Clinical Director
Athena Luxem, CCF Supervisor/Quality Improvement Manager
Katie Myhre, COE Supervisor/Program Development Manager
Kate Perleberg, CFO
Paula Buege, Family Advocate
Kay DeWaide, Family Advocate/Artspeak
Sarah Mislinski, CCF Supervisor
Michal Osier, HDP Program Supervisor
Adam Schroeder, TIP Supervisor
Katie Snow, ECI Program Supervisor



Children Come First Program Staff

Beth Adamski, Clinical Specialist
Michelle Brandemuehl, CCF Coordinator
Brittany Brooks, CCF Coordinator
Kristina Coenen, CCF Coordinator
Nani Gebrechristos, CCF Coordinator
Carla Helgaas, Clinical Specialist
Maki Horibe, Referral Coordinator
Sheena Jacobi, CCF Coordinator
Tricia Johnson, CCF Coordinator
Sara Kind, Clinical Specialist
Jessica Klabough, Referral Coordinator
Trina Nelson, CCF Coordinator
Amal Othman, Clinical Specialist
Audra Rykal, Clinical Specialist
Theresa Schroeder, Clinical Specialist
Jenny Sze, CCF Coordinator
Anne Totero, Clinical Specialist
Lindsay Udovich, CCF Coordinator
Brianna Vejvoda, CCF Coordinator
Lindsey Weber, CCF Coordinator
Katie Weir, CCF Coordinator

Transition to Independence Program Staff

Colleen Baird, Transition Specialist
Anna Bedford, Transition Specialist
Jennifer Fortune, Transition Specialist
Emily Vander Velden, Transition Specialist

Administrative Staff

Tanya Graham, HR Program Specialist
Debra Jellings, Exec. Admin Assistant
Kristie Klus, Admin Assistant
Bev Kurt, Office Assistant

Early Childhood Initiative Staff

Rebecca Anderson, Lead Family Support Specialist
Nicole Butterbaugh, Family Support Specialist
Mercy Greenwald, Lead Family Support Specialist
Kjerstin Gurda, Family Support Specialist
Ashley Hayes, Family Support Specialist
Veronica Ibarra, Family Support Specialist
Stephanie Krook, Family Support Specialist
Chris Lee, Family Support Specialist
Bret Schluederberg, Family Support Specialist
Carrie Tourek, Lead Family Support Specialist
Sarah West, Family Support Specialist
Asha Witherell, Family Support Specialist

Court-Ordered Evaluations Staff

Stephanie Donahue, Psychologist
Amy Enloe, Program Support Specialist

Engagement Project

Robin Gray, Engagement Coordinator/COE
Program Support Staff

Mental Health Coordination Program

Casey Zadoka, Referral Specialist

OUR PROGRAMS

Children Come First Case Management

Supporting Dane County youth ages 0-19 with diagnosed mental health concerns by providing comprehensive care management, family advocacy and wraparound services. CCF Coordinates traditional and nontraditional services to support children in their homes, schools, and communities.

Community Partnerships served a total of 166 youth in 2014. Fifty-nine percent of the youth who closed from CCF Case Management did so due to substantial progress, 77% of youth were successfully living in their parental or relative home at the time of their disenrollment, with an additional 8% at an adoptive home.

Engagement Project

A collaboration between Community Partnerships, United Way and MMSD, supporting students with emotional and behavioral difficulties to successfully transition from middle school to high school.

Engagement Project served a total of 40 students during the 2014-2015 academic year. Funding for the project ending on December 31, 2014. We continued to provide services to limited students/families through the end of the school year in order to ensure a smooth end to the project. We have provided feedback to MMSD about creating successful transitions for all students.

Children Come First Hospital Diversion

A short-term (30-90 days) program supporting Dane County youth ages 0-19 at imminent risk of psychiatric hospitalization. HDP provides parent/child support and behavior management, crisis stabilization, medication management, and wraparound service coordination.

The overarching goal of the Hospital Diversion Program is to stabilize youth at imminent institutional risk to prevent a hospitalization from occurring.

HDP had an 87% success rate in 2014, diverting hospitalizations for 26 of the 30 youth served.

Early Childhood Initiative

ECI is an innovative home visitation and employment program designed to improve life outcomes of Dane County's most vulnerable families with a special emphasis on economic self-sufficiency, positive infant and child development, and maternal and infant mental health.

In 2014, ECI served 145 households or families with 277 children and an additional 8 households involved pregnant mothers. Family Support Specialists spent almost 4,800 hour of direct contact, case management, and consultation to those families enrolled in 2014.

Family Advocacy & Support

Community Partnerships provides family advocacy services and support for all participants and their families involved in Children Come First, Transition to Independence, and Early Childhood Initiative Programs. Family Advocates also coordinates yearly outreach to the greater Dane County community to help participants and families access resources.

Court-Ordered Evaluations

Community Partnerships provides an integrated process of brokering court-ordered evaluations for individuals in Dane County under the following Wisconsin State Statutes: Juvenile Justice Code 938.295, Children's Code 48.295, Emergency Detention 51.15, Involuntary Commitment for Treatment 51.20, and Guardianship 54/55. The program manages a diverse provider network of over 40 qualified mental health professionals including Master's level clinicians, Licensed Psychologists, and Licensed Psychiatrists.

In 2014, COE hired an Internal Evaluator to complete psychological evaluations under the Juvenile Justice Code and Children's Code. Our Internal Evaluator, Stephanie Donahue, PhD performed 42 evaluations for the COE program in 2014. In total, the COE program brokered 1,483 evaluations in 2014. Efficiencies were created by the utilization of an Internal Evaluator, the use of videoconferencing for clinical interviews, and capturing Chapter 51 Stipulations and Waivers prior to evaluator assignment.

Transition to Independence

Providing individualized and comprehensive case management, assisting young adults aged 18-30 to transition from children's to adult services and work toward meaningful life goals and independence. Consumers work in partnership with a transition specialist to establish and make measured progress toward recovery goals around education, employment, housing, and applicable mental health services.

In 2014, TIP spent almost 3800 hours offering case management and crisis stabilization services to the 69 consumers enrolled.

Mental Health Coordination

A partnership between Community Partnerships and Madison Metropolitan School District, funded by a grant from Attic Angel Associate, providing a single point of access to the MMSD Student Services Staff to help them navigate the children's mental health system in Dane County. During the 2014-2015 academic school year, 54 Children were referred to the MHCP.

2014 YEAR IN REVIEW

The Circle of Hope hosted the annual Casino Night Fundraising event with a theme of Roaring 20's. Attendance at the event doubled from the previous year, increasing net revenue and visibility for Community Partnerships.

CP integrated the Early Childhood Initiative (ECI) into the agency, expanding our programming to 4 community locations and a service array that includes programing for 0-3 year olds and their families.

CP contracted with Group Health Cooperative and Unity to provide Hospital Diversion Services for 11 youth experiencing mental health crises.

CP began offering ArtSpeak and social groups to TIP participants.

Executive Director presented alongside the Alliance for Strong Families and Communities to the Missouri Coalition of Children's Agencies (MCCA) on CP's process of reinventing itself and remaining relevant in today's health care and human services environment.

CP planned and hosted our 4rd annual community collaborations conference, titled *The Game of Life: The Attachment Through the Lifespan*.

The TIC Committee partnered with ECI to facilitate improvements to the ECI Satellite Offices.

CP awarded the contract for the Comprehensive Community Services (CCS) Provider Network.

Court-Ordered Evaluation Program (COE) hired an in-house evaluator, increasing the program's capacity to broker and complete evaluations, dramatically decreasing the wait time for evaluations to be assigned and completed.

Services for youth in the CCF program expanded with the addition of the CCF-Family Support unit, offering case management services to children at risk of out-of-home placement in Dane County.

CP was awarded \$3000 by University of Wisconsin Medical Foundation.

Launched Mental Health Coordination Program.

Hospital Diversion Program (HDP) expanded, hiring an additional Clinical Specialist and Program Supervisor to meet the increased needs for stabilization services to CCF enrollees and Commercial HMOs.

Established contract with Oregon State Department of Human Services for Case Management.

ECI reinvigorated a collaboration between United Way and all Home Visiting programs in Dane County, and will host the first "Home Visiting Consortium" to be held in February, 2015



STAFF DEVELOPMENT

Community Partnerships provides an in-house training curriculum to all direct care staff to adequately prepare them to carry out the functions of their job. The following were staff development and training topics in 2014:

January: Trauma Free Crisis Intervention
February: Motivational Interviewing & Intro to Cognitive-Behavioral Therapy
March: Autism Basics: Treatment Philosophy & Intervention
July: Young Adults: Prevention & Recovery, AODA Assessment and Treatment
August: School System Through the Child's Eyes & IEPs
September: The Game of Life: The Attachment Through the Lifespan
November: Diversity Training with Groundworks

2014 DONORS & SUPPORTERS

Community Partnerships thanks our 2014 supporters:

Donors

American Family Insurance
American Transmission Company
Virginia Ambrose
Gordon Anderson
Anne Arnesen
Alisha Arnold
Associated Bank
Ballweg Chevrolet
Janice Banicki
Robert and Mary Bean
Casey Behrend
Brenda Bellisle and Patrick Nichols
Dr. Lauren Bern
Douglas and Beverly Bennett
BMO Harris
Anne Bogar and Donald Dyke
Larry and Karen Bowman
Kathleen M. Braun
Sherry Casali
Susan Clark
Cresa
Jennifer Cullen
Cullen, Weston, Pines & Bach LLP
Dane County Sheriff Association
Jeannette Deloya
John and Heather Dobson
Door Creek Golf Course
Patrick Brian Duzan
Epic Systems
William and June Ganser
Shelly Gaylord
Gordon Flesch Company
Jan Greenberg
Dianne Greenley
Carol and Chad Grob
James and Joann Gruennert
Group Health Cooperative
Katherine Halley

Susan Heidrich
Barb and Mark Jung
Kestrel Management
Bryan and Shelley Koch
Patrick LeMire
M3 Insurance
Madison Gas & Electric
Penny Majors and Karen Greenler
Deborah Martin
Meriter Hospital
Sven Midelfort
Carolyn Ninedorf
Mike and Cassie Noltnerwyss
Oak Bank
Tim Otis
Peterson Technology Group
Erin Raddemann
Wayne Reschke
Greg and Dusty Rogers
Elizabeth Rudy
Carol Samuel
John Schanen
Daniel Simon
David Spahos
Kimberly Stelse
Carrie Strong
Marjorie Strong
Scott and Sarah Strong
James and Barb Tierney
Mindy and Jack Trudell
James and Jane Van Den Brandt
Karen and Karl Von Huene
Wegner CPAs
West Bend Mutual Foundation
Christine Wittleder
Carol Ziesemer
Other Anonymous Donors

Abuelo's Mexican Restaurant	Inner Fire Yoga
Amanti Art	Jung's Garden Center
American Players Theater	Kayser Automotive Group
Ale Asylum	Kneaded Relief Day Spa
All Things G&D	Little Luxuries
Bellman Family Farms	Madison Eagles Auxiliary
Benvenuto's	Madison Mallards Baseball Club
Boulder's Climbing Gym	Madison Originals
Bunky's Café	Madtown Twisters
Rick Bush	Milwaukee Bucks
Capitol Brewery	Milwaukee County Zoo
Capitol Kids	Dan and Sarah Pautz
Chalmer's Jewelers	PF Chang's
Comedy Club on State	Rebecca Pfeifer
Kay DeWaide	Pinnacle Health & Fitness
Door Creek Golf Course	Playthings
Patrick Brian and Lori Duzan	Red Sage Health
Eno Vino	Rejuvenation Spa
Ephraim Faience Pottery	Sardine
Fired Up Pottery	Star Liquor
Flat Top Grill	Stoughton Opera House
Food Fight Inc	Ten Pin Alley
Gigi's Cupcakes	The Great Dane
Glass Nickel Pizza	The Green Owl
Glenway Golf Course	The Meadows of Sixmile Creek
Gold's Gym	The Shoe Box
Green Bay Packers	Trek Travel
Gymfinity	Ultrazone
Hampton Inn Milwaukee	Ultimate Spa Salon
Hampton Inn & Suites Madison	Underground Butcher
Hilton Garden Inn Middleton	Von Rutenberg Ventures
Hilton Monona Terrace	Weary Traveler
HyVee Food Stores	Wegner CPAs
Ian's Pizza	Willy St. Co-op



ASSETS	
<i>Current Assets:</i>	
Cash	\$ 1,256,940
Accounts Receivable	87,375
Prepaid Expenses	58,131
Total Current Assets:	\$ 1,402,446
Equipment, Net	-
TOTAL ASSETS	\$ 1,402,446
LIABILITIES & NET ASSETS	
<i>Current Liabilities:</i>	
Accounts Payable	\$ 625,206
Accrued Payroll & Related Expenses	111,747
Total Current Liabilities:	\$ 771,960
NET ASSETS	630,486
TOTAL LIABILITIES & NET ASSETS	\$ 1,402,446